





excitement



healthy  
lifestyle



trip



happiness



holiday







## GENERAL INFORMATION

<b>Name of Hotel</b>	: ROYAL DIWA TEKIROVA RESORT
<b>Offical Category</b>	: 5 Star Hotel
<b>Address</b>	: Tekirova Mah. Tekirova Cad. No:19 Kemer Antalya Türkiye 07995
<b>Company Name</b>	: Tekirova Turizm Yatırımları Anonim Şirketi
<b>Company Address</b>	: Yeşilova Mah. Aspendos Bul. NO: 168-C Kat:1 Muratpaşa Antalya Türkiye 07200
<b>Tax Office / NO</b>	: Antalya Kurumlar / 8360016209
<b>Phone Number</b>	: + 90 242 821 47 50 Pbx
<b>Fax Number</b>	: + 90 242 821 55 48
<b>Web sitesi</b>	: <a href="http://www.royaldiwa.com">www.royaldiwa.com</a>
<b>E-mail</b>	: <a href="mailto:info@royaldiwa.com">info@royaldiwa.com</a>
<b>Total Land</b>	: 120.000 m <sup>2</sup>
<b>Location</b>	: By The Sea
<b>Number Of Rooms</b>	: 477
<b>Number Of Beds</b>	: 978
<b>Hostel Status</b>	: Ultra All Inclusive
<b>Languages</b>	: Turkish, English, German, Russian
<b>Beach</b>	: Small gravel and sand (550 m.), Blue Flag (Shoes are recommended for the coast)
<b>Pier (on the beach)</b>	: 1 pier
<b>Certificates</b>	: Blue Flag, Safe Tourism Certificate





## ROYAL DIWA LEJANT

1. MAIN ENTRANCE
2. PARKING AREA
3. MAIN BUILDING
4. RECEPTION
5. SHOPS
6. PADOLIA RESTAURANT
7. BACCHUS LOBBY BAR
8. CRÈME DE LA CRÈME (PATISserie)
9. JAZZ BAR
10. MEETING ROOMS ( OTTOMAN & PHASELIS HALLS)
11. DOCTOR
12. SPA / FITNESS/ INDOOR POOL /COIFFEUR
13. STANDARD ROOMS
14. FAMILY / JUNIOR SUITE ROOMS
15. DIWA CLUB/LAKE ROOMS & DIWA CLUB / LAKE SUITE ROOMS
16. LAKE HOUSE POOL
17. LAKE HOUSE BAR
18. HIKING TRAIL
19. EXECUTIVE DUBLEX/FAMILY DUBLEX SUITE
20. EXECUTIVE POOL
21. RELAX POOL
22. CHILL BAR
23. HUNGRELLA
24. OTTY KIDS CLUB & KIDS POOL
25. ANCHOR RESTAURANT
26. LALE TURKISH RESTAURANT
27. MAIN POOL
28. NEPTUN BAR
29. PHOTOGRAPHER
30. ENTERTAINMENT INFO DESK
31. DRAGON RESTAURANT
32. AMPHI THEATRE
33. POSEIDON AQUAPARK
34. POSEIDON FOOD COURT
35. TENNIS COURT
36. CHIMÈRE BEACH BAR
37. TOWEL DESKS
38. BEACH VOLLEY
39. WATER SPORTS
40. PAVILLIONS
41. PIER / PIER LOTUS BAR
42. SHOW CENTER







## NEARBY DESTINATIONS

### Location

Airport	: Antalya Airport	( 70 km ) 60 minutes driving away
Closest Residential Areas	: Tekirova	( 02 km ) 05 minutes driving away
	: Çamyuva	( 10 km ) 10 minutes driving away
	: Kemer	( 18 km ) 20 minutes driving away
	: Antalya	( 60 km ) 1 hour driving away
Hospital	: Kemer	( 18 km ) 20 minutes driving away
Historical Places	: Phaselis	( 08 km ) 10 minutes driving away
	: Olympos	( 35 km ) 30 minutes driving away
Shopping Center	: Tekirova	( 02 km ) 05 minutes driving away
Golf Area	: Belek	( 105 km ) 90 minutes driving away
Diving Center	: Three Islands	( 03 km ) 15 minutes by boat
Ski	: Tahtalı Mountain	( 08 km ) 15 minutes by telferage
	: Saklıkent	( 102 km ) 2 hours driving away
Horse Riding	: Çamyuva	( 10 km ) 10 minutes driving away
Rafting	: Köprülü Canyon	( 115 km ) 2 hours driving away
Transportation	: Minibuses depart from the front of the hotel to Phaselis, Çamyuva, Kemer, and Antalya every 15 minutes.	
Taxi	: 24 hours from the taxi stand located in front of the hotel.	



Olympos - Yanartaş



Phaselis Antik Kenti





## ROOMS AND FEATURES

### Standart Club Rooms

**Standart Club Rooms (258)**  
**28-30m<sup>2</sup> Min. 1 / Max. 3+1 Person**

The rooms are equipped with 2 single beds or 1 french bed, in some of our rooms a sofa bed with the feature of being a single bed, a 140-inch LCD TV with satellite channels, IPTV, a capsule coffee machine, a hot set-up (tea, coffee set), a minibar, a direct line telephone, split air conditioning (hot-cold), laminate flooring, a bathroom with a shower, a telephone in the bathroom, a toilet, a hairdryer, slippers, and an electronic safe. The rooms offer a garden view.







## ROOMS AND FEATURES

### Diwa Deluxe Sea Room

#### Diwa Deluxe Sea Room ( Main Building) (33 adet) 58-60m<sup>2</sup> Min. 1 / Max. 3 Person

The rooms are equipped with 2 single beds or 1 french bed, a sofa bed with the feature of being a single bed, a 140-inch LCD TV with satellite channels, IPTV, a capsule coffee machine, a hot set-up (tea, coffee set), a minibar, a direct line telephone, VRF air conditioning system, ceramic floor, a bathroom with a shower, a telephone in the bathroom, a toilet, a hairdryer, bathrobes, special care set slippers, and an electronic safe. The rooms offer a land view. Our rooms also have a balcony.







## ROOMS AND FEATURES

### Diwa Deluxe Land Room

#### Diwa Deluxe Land Room (Main Building) (14) 58-60m<sup>2</sup> Min. 1 / Max. 3 Person

The rooms are equipped with 2 single beds or 1 french bed, a sofa bed with the feature of being a single bed, a 140-inch LCD TV with satellite channels, IPTV, a capsule coffee machine, a hot set-up (tea, coffee set), a minibar, a direct line telephone, VRF air conditioning system, ceramic floor, a bathroom with a shower, a telephone in the bathroom, a toilet, a hairdryer, slippers, bathropes, special care set and an electronic safe. The rooms offer a land view. Our rooms also have a balcony.







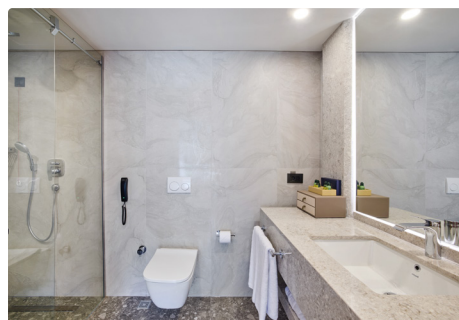
## ROOMS AND FEATURES

### Diwa Club Rooms

#### Diwa Club Rooms (82)

35-37m<sup>2</sup> Min. 2 / Max. 3 Person

The rooms are equipped with 2 single beds or one french bed, and some rooms have a sofa bed with the feature of being a single bed. They also feature a 140-inch LCD TV with satellite channels, IPTV, a capsule coffee machine, a hot set-up (tea, coffee set), a minibar, a direct line telephone, VRF air conditioning system, ceramic floor, a bathroom with a shower, a telephone in the bathroom, a toilet, a hairdryer, slippers, bathropes, special care set and an electronic safe. The rooms offer a garden view. Some of our ground floor rooms have balconies, while the other rooms have French balconies.







## ROOMS AND FEATURES

### Diwa Club Suite

**Diwa Club Suite (11)**  
**55-57m<sup>2</sup> Min. 3 / Max. 4 Person**

The rooms consist of a living room and a bedroom (1 double bed). The living room features a sofa bed with the feature of being a single bed. The room is equipped with a 140-inch LCD TV with satellite channels, IPTV, a capsule coffee machine, a hot set-up (tea, coffee set), a minibar, a direct line telephone, VRF air conditioning system, ceramic floor, a bathroom with a shower, a telephone in the bathroom, a toilet, a hairdryer, slippers, bathropes, special care set and an electronic safe. The rooms offer a garden view and have a terrace.







## ROOMS AND FEATURES

### Diwa Lake House Rooms

#### Diwa Lake House Rooms (25) 35-37m<sup>2</sup> Min. 2 / Max. 3 Person

In the rooms, there are either two single beds or one double bed, and some rooms also have a single bed in addition to the main bed. The rooms are equipped with a satellite broadcast 140-inch LCD TV, IPTV, a capsule coffee machine, a hot set up including a tea and coffee set, a minibar, a direct line telephone, VRF air conditioning system, ceramic flooring, a bathroom with a shower, a telephone in the bathroom, a toilet, a hairdryer, slippers, bathropes, special care set and an electronic safe. The rooms have a pool view. Some of our ground floor rooms have a balcony, while the other rooms have French balconies.







## ROOMS AND FEATURES

### Diwa Lake House Suite

**Diwa Lake House Suite (6)**  
**55-57m<sup>2</sup> Min. 3 / Max. 4 Person**

The rooms consist of a living room and a bedroom (1 french bed). The living room features a sofa bed with the feature of being a single bed. The room is equipped with a 140-inch LCD TV with satellite channels, IPTV, a capsule coffee machine, a hot set-up (tea, coffee set), a minibar, a direct line telephone, VRF air conditioning system, ceramic floor, a bathroom with a shower, a telephone in the bathroom, a toilet, a hairdryer, slippers, bathropes, special care set and an electronic safe. The rooms offer a pool view and have a terrace.





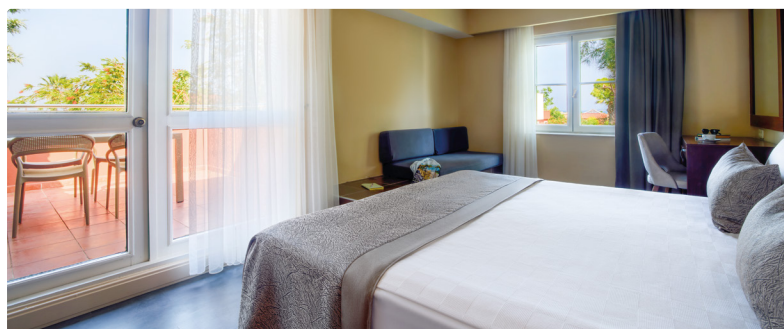


## ROOMS AND FEATURESİ

### Junior Club Suite

**Junior Club Suite (12)**  
**45 m² Min. 3 / Max. 3 + 1 Person**

The rooms consist of a living room, a bedroom (1 french bed), and a single bathroom with a toilet. The living room features a convertible sofa set. It is equipped with a 140-inch LCD TV with satellite channels, IPTV, a capsule coffee machine, a hot set-up (tea, coffee set), a minibar, a direct line telephone, split air conditioning (hot-cold), laminate flooring, a bathroom with a bathtub, a telephone in the bathroom, a toilet, a hairdryer, slippers, and an electronic safe. The rooms offer a garden view and have a terrace.







## ROOMS AND FEATURES

### Family Club Suite

**Family Club Suite (24)**  
**55-60 m<sup>2</sup> Min 4 / Max 5+1 Person**

The rooms consist of a living room, two bedrooms (1 french bed + 2 single beds), and a single bathroom with a toilet. The living room features a convertible sofa set. The room is equipped with a 140-inch LCD TV with satellite channels, IPTV, a capsule coffee machine, a hot set-up (tea, coffee set), a minibar, a direct line telephone, split air conditioning (hot-cold), a bathroom with a bathtub, a telephone in the bathroom, a toilet, a hairdryer, slippers, and an electronic safe. The rooms offer a garden view and have a terrace.







## ROOMS AND FEATURES

### Executive Dublex Suite

#### Executive Dublex Suite (2+1) (4)

100 m<sup>2</sup> Min. 3 / Max. 4 Person

The Royal Diwa Resort is designed as a separate and dublex unit within the spacious garden of the hotel. The lower floor features a spacious living room, a terrace, and a toilet. The upper floor consists of 1 master bedroom with an en-suite bathroom (shower), toilet, and a dressing room, 1 children's bedroom, and a shared bathroom (shower) and toilet for common use. Both the living room and all the rooms are equipped with a 140-inch LCD TV with satellite channels and IPTV. Additionally, amenities such as a capsule coffee machine, a hot set-up (tea, coffee set), a minibar, a direct line telephone, split air conditioning (hot-cold), laminate flooring in the living room and upper floor rooms, a telephone in the bathroom, a hairdryer, slippers, bathrobes, special care set and an electronic safe are provided.







## ROOMS AND FEATURES

### Executive Family Dublex Suite

**Executive Family Dublex Suite (3+1) (3)**  
**100 m<sup>2</sup> Min. 4 / Max. 6+1 Person**

The Royal Diwa Resort is designed as a separate and dublex unit within the spacious garden of the hotel. The lower floor features a spacious living room, a terrace, and a toilet. The upper floor consists of 2 bedrooms and 1 children's bedroom, as well as a shared bathroom (shower) and toilet for common use. Both the living room and all the rooms are equipped with a 140-inch LCD TV with satellite channels and IPTV. Additionally, amenities such as a capsule coffee machine, a hot set-up (tea, coffee set), a minibar, a direct line telephone, split air conditioning (hot-cold), laminate flooring in the living room and upper floor rooms, a telephone in the bathroom, a hairdryer, slippers, bathropes, special care set and an electronic safe are provided.







## OTTY KIDS CLUB AND Features

### ACTIVITIES FOR AGE GROUPS

- Mini : 4-7 years old
- Junior : 8-12 years old

### KIDS CLUB WORKING HOURS

- 10.00 - 24.00

### KIDS CLUB FEATURES AND ACTIVITIES

- Children's reception and registration desk
- Cinema room
- Children's art studio

- For lunch and dinner, there is a buffet-style children's restaurant in a separate section within the main restaurant.
- Within the main restaurant
- Daily tournaments, games with music
- Amphitheater children's musical and theater performances
- Mini disco
- Within the aquapark
- Interactive games for children to participate in festivals and enjoy with their families.







## SWIMMING POOLS & BEACH Features

LAKE POOL		Fresh Water	85m <sup>2</sup>
OUTDOOR SWIMMING POOL		Fresh Water	716m <sup>2</sup>
INDOOR SWIMMING POOL		Fresh Water	50m <sup>2</sup>
CHILDREN POOL		Fresh Water	100m <sup>2</sup>
RELAX POOL		Fresh Water	220m <sup>2</sup>
EXECUTIVE POOL	Fresh water (It is exclusive for the use of Villa guests only)		120m <sup>2</sup>
ADULT AQUAPARK (10:00 - 12:00 /14:00 – 18:00	Fresh water (6 water slides)		
CHILD AQUAPARK (10:00 - 12:00 /14:00 – 18:00	Fresh water (6 water slides)		

### PLAJ

The beach is 550 meters long and consists of a mixture of sand and small pebbles (wearing water shoes is recommended). There is a designated relax area on the beach exclusively for adults, where umbrellas, sunbeds, sunbed cushions, and beach towels are provided free of charge. Additionally, there is a boat/watersports dock, a beach volleyball court, and various watersports activities available. Our guests can also enjoy the private sunbathing terraces (pavilions) on the beach for an additional fee, subject to availability. Villa room category guests receive this service free of charge. There is a designated sunbathing area for disabled guests on the beach.







## FOOD AND BEVERAGE Features

### FOOD & BEVERAGE

	Open Hours	Restaurant Name		Buffet
Breakfast	07.00 - 10.00	Padolia Restaurant	Free	Open Buffet (International)
Late Breakfast	10.00 - 11.00	Padolia Restaurant	Free	Open Buffet (International)
Beach Snack	11.00 - 18.00	Poseidon Food Court	Free	Kumpir, Waffle, Ice Cream, Fruits etc.
Kids Buffet	12.30 - 13.30	Padolia Restaurant	Free	Open buffet- Special lunch buffet for kids
Lunch	12.30 - 14.30	Padolia Restaurant	Free	Open Buffet (International)
Snack A'la Carte	12.00 - 16.00	Dragon Snack	Free	A'la Carte Services
Snack A'la Carte	12.00 - 16.00	Pool Snack	Free	A'la Carte Services
Snack A'la Carte	12.00 - 16.00	Healthy Life	Free	A'la Carte Services
Ice Cream	11.00 - 18.00	Poseidon Food Court	Free	Self-servis
Flatbread / Pita	11.00 - 16.00	Hungrella	Free	Local flatbread, pita and ayran
Patisserie	11.00 - 18.00	Creme De La Crema	Free	Sweet, salty, wet/dry cake types
Dinner	18.30 - 21.00	Padolia Restaurant	Free	Open Buffet (international)
A-la carte	19.00 - 22.00	Dragon Restaurant	(With reservation & Charge)	Far Eastern Cuisine / Elective Menu
A-la carte	19.00 - 22.00	Lale Restaurant	(With reservation & Charge)	Turkish Cuisine / Elective Menu
A-la carte	19.00 - 22.00	Anchor Restaurant	(with reservation/free of charge) Min.5 night Stay	Seafood / Elective Menu
Night Bistro	00.00 - 06.00	Lale Restaurant	Free	Soup, salad, fruits and light snacks

\* Themed Nights at the Main Restaurant on certain days of the week







## FOOD AND BEVERAGES Features

BAR NAMES	Location	Open Hours	Outdoor	Indoor	Non-Alcoholic Cold Drinks	Non-Alcoholic Hot Drinks	Alcoholic Cold Drinks	Extra charge
LOOBY BAR	Lobby	24 Saat	X	X	X	X	X	-
POOL BAR	Pool	10.00-00.00	X	-	X	X	X	-
RELAX BAR	Beach	10.00-20.00	X	-	X	-	Beer	-
BEACH BAR	Beach	10.00-00.00	X	-	X	X	X	-
COFFEE CORNER	Aquapark	10.00-18.00	X	X	X	X	X	-
PATISSERIE BAR	Lobby	11.00-18.00		X	X	X	-	-
LAKE BAR	Diwa Club	10.00-18.00	X	X	X	X	X	-
PIER BAR	Pier	10.00-20.00	X		X	X	X	-
JAZZ BAR	Lobby	22.00-00.00		X	X	X	X	X

\* The Jazz Bar is open on certain days of the week.

### MINIBAR

In our Diwa and Executive room types, the mini bars are fully stocked daily. For other room types, the mini bars are fully stocked on the day of check-in. They include 2 cans of beer, an energy drink, soft drinks, and snacks (such as chips, chocolate, diet biscuits, and soft candies). Requesting a second mini bar refill on the same day will incur an additional charge.

Our rooms are equipped with a hot set-up, a Nespresso capsule coffee machine, and 4 complimentary coffee capsules on the day of check-in. Requesting an extra 4 capsules on the same day will incur an additional charge. (In our Diwa and Executive room types, they are replenished daily, while in other room types, 4 varieties are provided on the day of check-in.)







## ENTERTAINMENT Activities

### ENTERTAINMENT

DAY ENTERTAINMENT	Accompanied by professional instructors, yoga, step aerobics, plates, aqua fitness, aqua bike, aqua jump etc.fun activities and outdoor extreme sports.
EVENING ENTERTAINMENT	With a blend of performances from various countries, our incredible nightly shows at the amphitheater and/or show center offer a wide range of entertainment for everyone. Our special live music teams cater to all tastes with their extensive repertoire, while DJ performances and thematic parties ensure unforgettable nights for our guests.
CHILDREN ENTERTAINMENT	Fun and educational activities are prepared for our little guests with the Kids concept, divided into two separate age groups: 4-7 and 8-12, available from 10:00 to 24:00, seven days a week. These activities include sports activities, Kids event concept days, children's shows created by professional teams, and Mini disco. There are also Kids festivals and interactive shows for families to participate in.







## SPORT Activities

### PERSONAL TRAINING

Daytime activities are accompanied by professional sports instructors and include a variety of outdoor activities. These activities include yoga, pilates, beach volleyball, aqua bike, aqua jump, and kango jump.







## MEETING ROOMS AND Features

### MEETING ROOMS

HALL NAME	Length	Width	Height	M2	Theatre	Class	Banquet	Cocktail
OTTOMAN	19.5m	19.3m	3.5-2.5m	378	250	120	150	300
PHASELIS	10.25m	9.33m	3.5m	95	60	36	50	100
FOYER	10.25m	9.38m	3.5m	96	-	-	-	60

\* **Technical Equipment:** TV, video, barcoveision (extra charge), flipchart, curtain, sound scheme, radio microphone, fixed microphone, lapel microphone.







## ULTRA ALL INCLUSIVE Concept

### FREE SERVICES

Breakfast, lunch, dinner, late breakfast, and open buffet night buffet, snack restaurant, food court, bakery, ice cream at designated hours, all non-alcoholic beverages, a wide variety of domestic and some high-quality foreign alcoholic beverages. Full minibar refill on the day of check-in in all rooms, extra minibar refill in Diwa rooms, daily special minibar refill for guests who booked Executive room category. In-room safe, high-speed unlimited wireless internet connection throughout the hotel, 6 adult water slides aquapark, 6 children water slides aquapark, totaling 12 water slides aquapark, card games, Turkish bath, sauna, fitness center, table tennis, mini club & playground (for 4-12 years old) at specified hours, children's animation, baby cot, high chair in the restaurant (subject to availability). Umbrella, sunbed, mattress, and beach towel.

### CHARGE SERVICES

All à la carte restaurants (with prior reservation and cover charge), freshly squeezed fruit juices, premium quality wine, champagne, and some premium foreign alcoholic beverages. Massage, peeling, beauty center, minibar refill in standard rooms, room service, hairdresser, use of private sunbathing areas on the beach (except for Executive room guests), turn-down service (except for guests in the Executive room category, honeymoon, and VIP categories), mini market, motorized water sports (water skiing, jet-ski, parasailing, catamaran, ringo, banana), windsurfing lessons, telephone, fax, and photocopy services, laundry services, doctor and nurse service, babysitting, baby monitor, stroller.

### IMPORTANT NOTES

All services and activities are subject to weather conditions, and it may not be possible to provide some services when conditions are unfavorable. The hotel management reserves the right to change operating hours and locations.

